



AUSTRALIAN INSTITUTE OF TRAFFIC PLANNING AND MANAGEMENT INCORPORATED

AITPM TECHNICAL TOUR

Patron: The Hon Tim Pallas MP, Minister for Roads and Ports



BICYCLE DESIGN IN PRACTICE

Tuesday 24th February 2009
2:00pm – 5:00pm

Bicycle Tour departing from Royal Park train station

An increasing number of bicycle facilities have been implemented across Melbourne, in response to an increase in cycling as a commuting and recreational transport mode. Treatments have evolved to provide for safety and amenity of cyclists and to increase awareness of their presence to motorists. The development and implementation of appropriate and safe bicycle facilities for both on-road and off-road environments is an essential tool for those involved in transport planning and management.

AITPM and Bicycle Victoria are proud to present this bicycle tour, visiting various bicycle treatment sites across inner Melbourne.

The tour will give a “first hand” view of various bicycle treatments and will enable discussion of their relative merits with other users as well as with presenters from Bicycle Victoria.

The 16-kilometre long circuit returning to Royal Park train station will include visits to on-road and off-road bicycle facilities in Carlton North, Carlton, Fitzroy, Collingwood and Parkville.

Tour Guide:

Jason den Hollander *Facilities Development Manager, Bicycle Victoria*



Participants are encouraged to bring their own bicycle and helmet.

Book early to reserve a place, tour numbers are limited

We are able to supply a limited number of bicycles and helmets. These need to be booked when you RSVP. Additional bicycles can not be provided on the day.

Light refreshments will be served afterwards.

RSVP to Emmanuel Natalizio (emmanuel.natalizio@trafficworks.com.au) by Tuesday 17th February. Please mention if you will bring your own bicycle or would like us to supply a bicycle for you.

This event contributes towards your Continuing Professional Development (CPD) requirements, as required by many professional associations.

“Growing traffic skills and knowledge to deliver sustainable transport”

National Sponsors:



Major Branch Sponsor:



www.aitpm.com



AITPM TECHNICAL TOUR

Tuesday 24th February 2009
2:00pm – 5:00pm



Meet at Royal Park train station



Train

Royal Park train station
(Upfield line)

Depart Flinders Street
Arrive Royal Park

1:21pm, 1:41pm
1:26pm, 1:56pm



Tram

Route 55, Stop 26
(West Coburg line)

Depart Domain Interchange
Depart Queen Victoria Market
Arrive Royal Park

1:16pm, 1:28pm
1:22pm, 1:34pm
1:46pm, 1:58pm

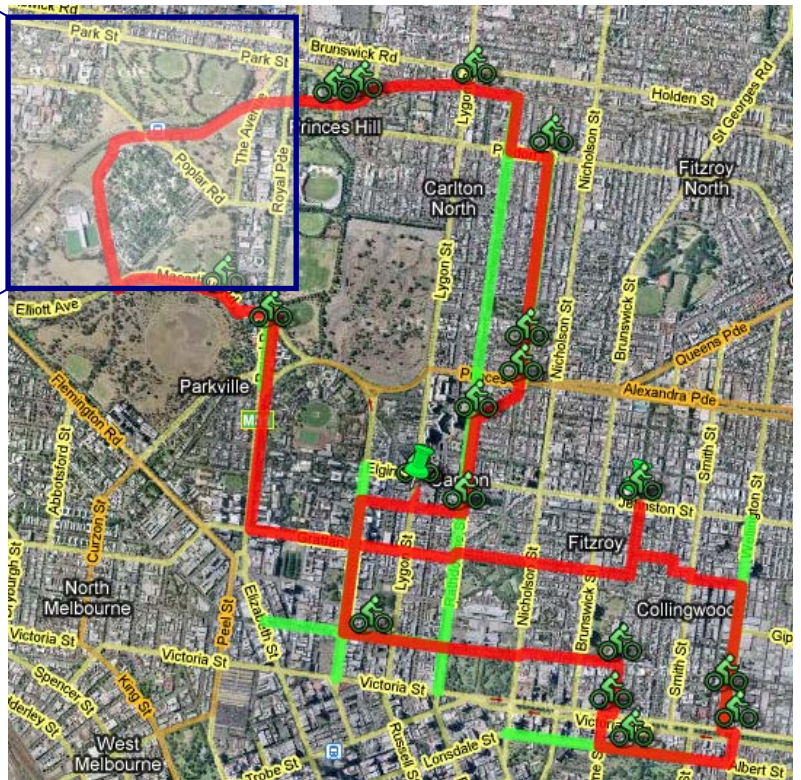


Bicycle / Car

Park at Melbourne Zoo
(Melways 29 E11)



Melways 29E11



AITPM / Bicycle Victoria tour, 16 km